

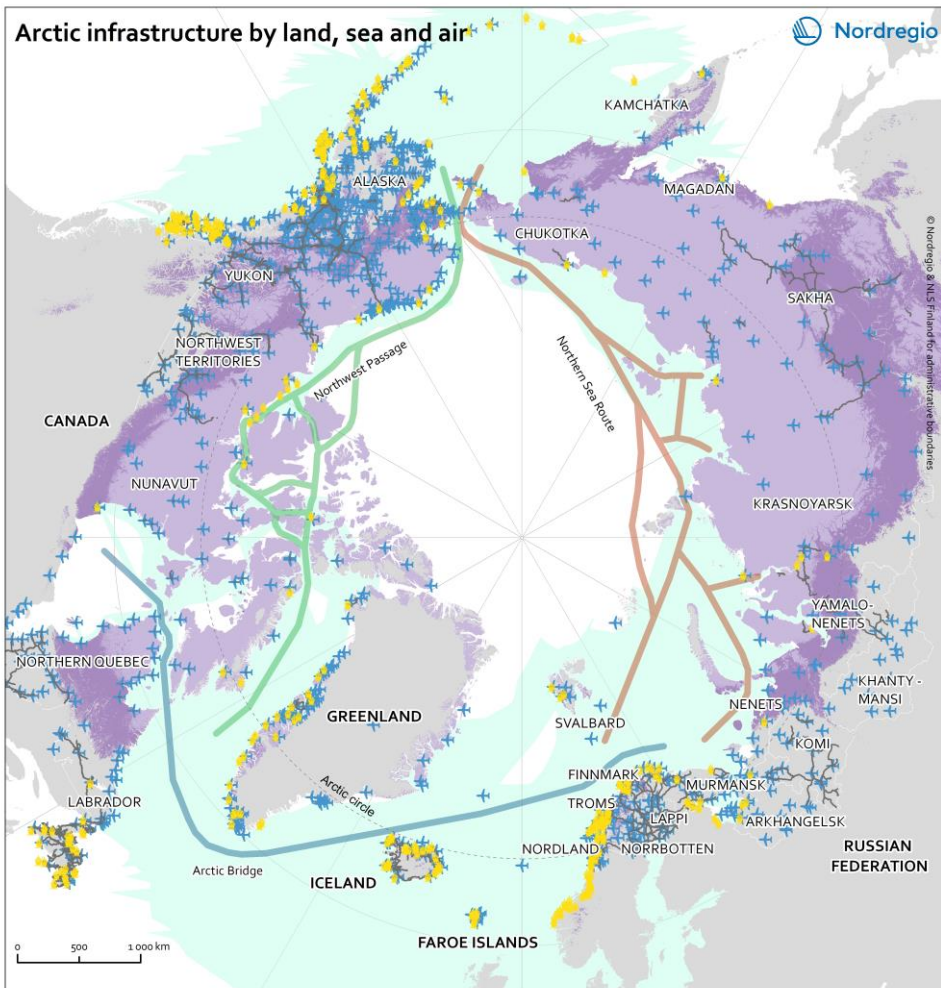
# **Implementing INFRANORTH: Engaging Communities in Research on Transport Infrastructures in the Arctic**

*Peter Schweitzer and Olga Povoroznyuk, University of Vienna*

Presentation at the workshop “RATIC meets M-MOSAiC:

Sharing Best Practices in Research on Infrastructure in the Arctic”

ASSW, online, 21 March, 2021



#### Arctic infrastructure

- Road network
- ★ Harbours
- ✈ Airports and heliports
- Vessel traffic area

#### Permafrost extent

- Future permafrost extent
- Baseline permafrost extent

#### Data sources:

Road - Natural Earth, Alaska Department of Transportation and Public Facilities, GeoGratis and DIVA-GIS;  
 Airport - OpenFlights, OurAirports;  
 Harbour and sea routes - MarineTraffic, NOAA, Nordregio, NSIDC, World Port Index (NGA) 2017, AIS vessel tracking data;

Permafrost - Hjort, J., Karjalainen, O., Aalto, J., Westermann, S., Romanovsky, V.E., Nelson, F.E., Etzelmüller, B. and Luoto, M., 2018.  
 Degrading permafrost puts Arctic infrastructure at risk by mid-century. *Nature communications*, 9(1), p.5147.

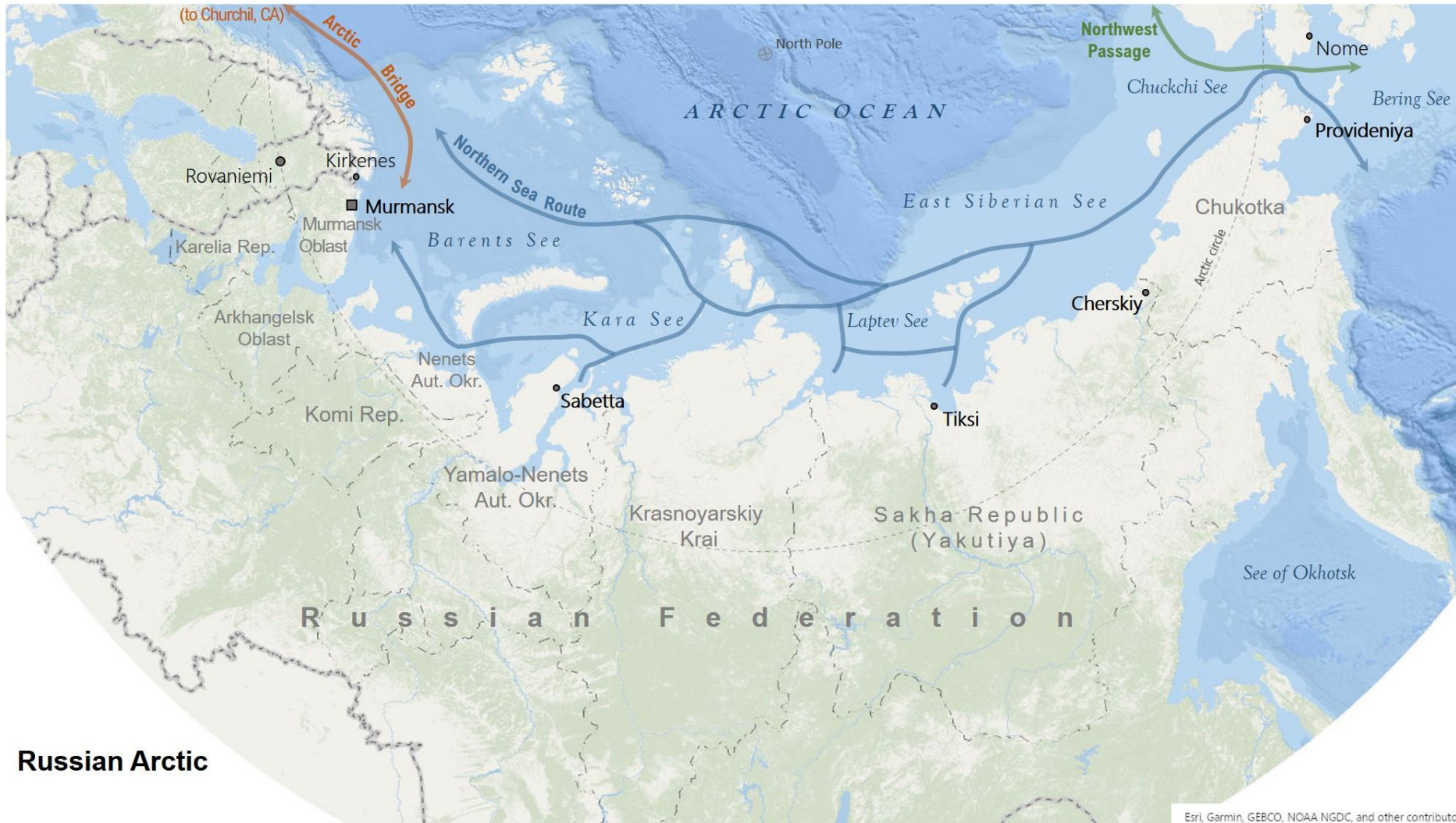
# Building Arctic Futures: Transport Infrastructures and Sustainable Northern Communities (INFRANORTH) (January 2021 – December 2025)

*What Is the Role of Transport  
 Infrastructures in  
 Sustaining Arctic Communities?*



# Study Region Russian Arctic

Northern Sea Route as backbone of the study region



Russian Arctic

## Case Studies

- ❖ Barents Region (Murmansk, Teriberka)
- ❖ Northern Yamal (Sabetta)
- ❖ Northern Yakutiya (Tiksi, Cherskiy)
- ❖ Bering Strait (Provideniya)



# Study Region North American Arctic



## Case Studies

- ❖ Bering Strait (Nome, Alaska)
- ❖ Alaska-Canada Border (Fort Yukon–Old Crow–Inuvik)
- ❖ Churchill (Manitoba)
- ❖ Davis Strait (Iqaluit, Nunavut)



# Study Region European Arctic



## Case Studies

- ❖ Davis Strait (Nuuk)
- ❖ Iceland (Finnafjörður)
- ❖ Svalbard (Longyearbyen)
- ❖ Barents Region (Kirkenes, Rovaniemi)

# Integration Component

- Methodological and theoretical integration across study regions and case studies
- Administration of surveys and other project cross-cutting activities (e.g., Scenario workshops; Panarctic Scenario Forum; Multimedia infrastructure archives; Curating INFRANORTH)
- Comparison of different types of transport infrastructures (air, river, road, railroad, sea)

6.7

**Futures of Arctic Marine  
Transport 2030: An Explorative  
Scenario Approach**

BY MARC MUELLER-STOFFELS AND HAJO EICKEN



# Engaging Communities

- Community-based research
- Introductory meetings
- Informal communication
- Local research assistants
- Partnership with research institutes and NGOs





# Collecting Data

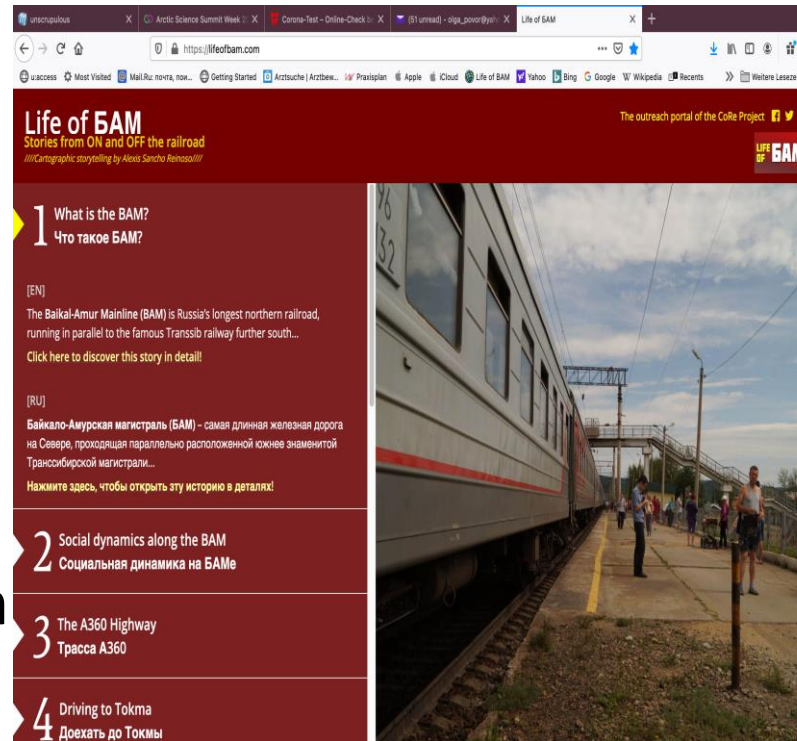
- Social, ethnographic and historical dimensions
- Fieldwork and participant observation
- Expert and biographical interviews
- Focus groups
- Sociological survey and statistics
- Archival records





# Sharing Back

- Dissemination of research results in a popular format
- Illustrated brochures in local and regional languages
- Multi-media “Infrastructure archives”
- Scenario-building workshops and reports in select communities
- Presentations in regional research institutions



# Ethical Considerations

- Ethics evaluation reports and reviews
- Access to field
- Data collection guidelines
- Data management and protection (esp. for vulnerable groups)



# Questions for Reflection

- To which extent is community-based participatory research possible in Arctic regions with different national colonial histories and political regimes?
- How should we adjust the project research protocol to local circumstances to arrive at a pan-Arctic comparative perspective?
- How do we build good and trustful relations with local communities under conditions of EU research ethics and bureaucratic data protection procedures?



# How to get in touch with us

- Project webpage: <https://infranorth.univie.ac.at>
- Project leader: Peter Schweitzer, [peter.schweitzer@univie.ac.at](mailto:peter.schweitzer@univie.ac.at)
- Research coordinator: Olga Povoroznyuk  
[olga.povoroznyuk@univie.ac.at](mailto:olga.povoroznyuk@univie.ac.at)
- Administrative coordinator: Johannes Kramer  
[johannes.kramer@univie.ac.at](mailto:johannes.kramer@univie.ac.at)